

8D6N Charms of Korea

Busan. Geoje. Tongyeong
Gyeongju. Seoul



KOREA
TOURISM
ORGANIZATION

Imagine
your
Korea

bto BUSAN
TOURISM ORGANIZATION

Highlights!

- Geoje Oedo Cruise
- Cheomseongdae Astronomical Observatory
- Tongyeong Cable Car <longest cable car in Korea>
- Miraesa Temple & Cypress Forest Bath
- Bulguksa Temple <UNESCO site>
- Ikseon-dong Hanok Village &
- Gyeongju Hwangnidan street



Activities!

- DIY Korean Chili Paste Making,
- Hanbok wearing at Changdeokgung Palace
- Shopping at Premium Outlet Mall, ancient street & traditional market
- Enjoy Korean Sauna Jimjibang

Gourmet!

- ❖ Soy Sauce Raw Crab and Abalone set, Lobster Seafood steamboat, Braised Mackerel with Beancurd, Korean Pork BBQ, Korean Ginseng Chicken soup, Korean rice lettuce wrap



Oedo Botania Island ~ Tropical Paradise on Earth~

A marine botanical garden on an island in Hallyeo National Marine Park between Tongyeong & Geoje Island. This private garden has expanded to cover the entire island in a plethora of plants in European style gardens, accented by sculptures and statues.



Bulguksa Temple

The representative relic of Gyeongju and was designated as a World Cultural Asset by UNESCO in 1995. The beauty of the temple itself and the artistic touch of the stone relics are known throughout the world.



Changdeokgung Palace

This is one of the most well-preserved palaces from Joseon Dynasty. It was designated as a UNESCO WORLD Heritage in 1997 and regarded as a Korean palace architecture masterpiece with buildings in perfect harmony with nature. Best known place for Spring Cherry Blossoms, Autumn Foliage & Winter Snow sight in Seoul.



Hwangnidan street

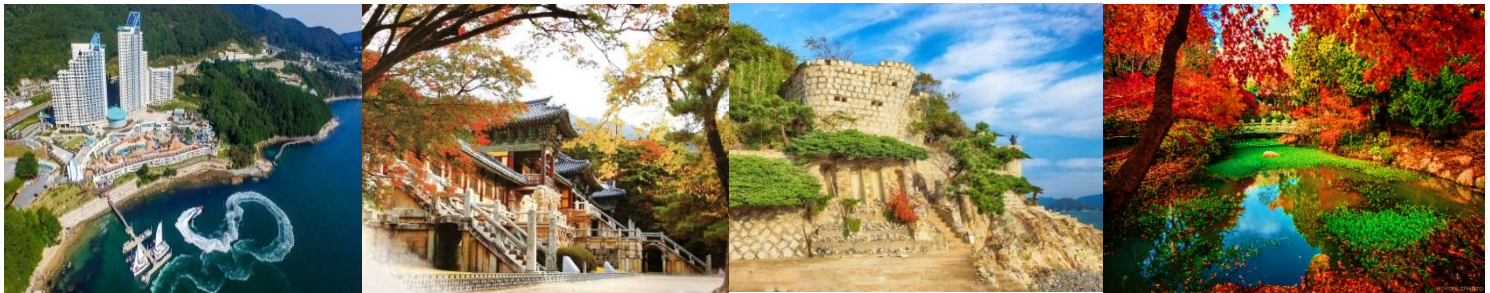
Hwangnidan street in Gyeongju is now the new "it" place to go to in Korea. Located in the country's former Shilla Dynasty capital, Hwangnidan street is where tradition meets the current aesthetic trends. You've got cafes galore, restaurants with unique architecture, and retro boutique shops mazed throughout alleyways around town.



Gamcheon Cultural Village

Dubbed as Korea's with murals Santorini, it provides visual delight to visitors and art installations, This historically rich mountainside slum became a famous tourist destination after getting an arty makeover with clever touches up the stairs, down the lanes and around the corners...

| Day | Breakfast | Lunch | Dinner | Hotel Or Similar Class |
|-----|-----------|-------------------------------------|--|--|
| 1 | | - | - | → |
| 2 | → | Boiled Pork and Squid in hot stew | Own Expense @BIFF Square | 4* Solaria Nishitetsu Hotel BUSAN |
| 3 | Hotel | Grilled Fish Set | PREMIUM ! Soy Sauce Raw Crab & Abalone set | EXCLUSIVE ! 5* Sono Calm GEOJE |
| 4 | Hotel | Own Expense @ Traditional Market | PREMIUM ! Lobster Seafood Steamboat | 2N 4* Solaria Nishitetsu Hotel BUSAN |
| 5 | Hotel | Braised Mackerel with Beancurd | Ssambap (Korean Rice lettuce wraps) | |
| 6 | Hotel | Pan Fried spicy chicken | Korean Pork BBQ | 2N 5* Deluxe NOVOTEL Ambassador Yongsan SEOUL |
| 7 | Hotel | Ginseng Chicken Soup | Own expenses @ Hongdae | |
| 8 | Hotel | → | | |



Day 1: Singapore → Incheon

Day 2: Incheon ~ KTX to Busan Station ~ Gamcheon Cultural Village ~ Songdo Sky Walk ~ BIFF Square

Day 3: Geoje ~ Maemiseong Castle ~ Geoje Oedo Cruise (Inc: Haegeumgang + Oedo Botania) ~ Geoje Windy Hill

Day 4: Geoje ~ Tongyeong ~ Tongyeong Cable Car (longest tourist cable car in Korea over 1,975m) ~ Traditional Market ~ Miraesa Temple & Cypress Forest ~ Yi Sun Sin Park ~ Busan

Day 5: Gyeongju (Ancient Capital) ~ Gyochon Traditional Village ~ DIY Korea Chili Paste Making ~ Cheomseongdae Astronomical Observatory (Autumn Pink Muly Grass) ~ Gyeongju Hwangnidan street (trendy café and artisan shops in over 1000 year old city street) ~ Rustic Hanok Style Starbucks ~ Bulguksa Temple <UNESCO cultural asset>

Day 6: Premium Outlet ~ KTX to Seoul ~ Ikseon-dong Hanok Village ~ Dongdaemun Market

Day 7: Changdeokkung Palace <UNESCO World Heritage> + Bonus: Hanbok Wearing ~ Ginseng Specialty shop ~ Cosmetic Duty Free ~ Jjimjilbang (Must try unique experience: Korea-Style Sauna) ~ Hongdae <vibrant street with shops, café & Restaurant>

Day 8: Healthy Liver Shop ~ Transfer to the Incheon Airport → Singapore



Note :

Updated:3-Jul-25_EN_HN

- During major international or local festive events, accommodation may not be arranged as stated as above.
- Tour groups may be merged and sequence of itinerary is subject to change without prior notice.
- Bonus tour will be not replaced nor refunded. Seasonal Tour subject to change by weather condition.
- All hotel ratings are based on local standard. In case of hotel rooms are running full, an equivalent standard hotel will be served as replacement.
- In the event of any discrepancy between the English and Chinese itineraries, the Chinese version shall prevail.
- Room type, size and/or view are allocated by hotel/resort, subject to availability.
- Tour is fully conducted in Mandarin.

康泰旅行社
HONG THAI TRAVEL



6533 1788



enquiries@hongthai.com.sg

釜山，巨济，统营，庆州，首尔

KOREA
TOURISM
ORGANIZATION

Imagine
your
Kore



BUSAN
TOURISM ORGANIZATION

- 巨济大江户游轮，巨济凤山，梅米城堡
- 庆州瞻星台
- 统营缆车<韩国最长的缆车>
- 统营弥来寺+柏树林森林浴
- 庆州佛国寺<联合国教课文组织遗址>
- 釜山松岛天空步道



- DIY韩国辣椒酱制作
- 昌德宫 + 韩服体验；享受韩式桑拿-汗蒸幕
- 购物乐：奥特莱斯Mall、注入新气息的古色老街和传统市场
- 5★ Sono Calm 巨济, 5★ 首尔龙山 Novotel 酒店

❖ 酱蟹鲍鱼套餐、龙虾海鲜火锅、韩式炖鲭鱼+豆腐、韩式烤肉、韩式参鸡汤、韩式米饭生菜卷....



《地球上热带天堂》外岛Botania是一个海洋植物园，欧洲和韩国风格的错综复杂的融合在位于统营和巨济道岛之间的一个岛上。这个私人花园已经扩展到整个岛屿，在欧洲风格的花园中种植了大量的植物，并以文化和雕像为重点。



庆州的代表性文物，1995年被联合国教科文组织指定为世界文化遗产。寺庙本身的美丽和石文物的艺术感举世闻名。



这是朝鲜王朝保存最完好的宫殿之一。它于1997年被指定为联合国教科文组织世界遗产，被视为韩国宫殿建筑的杰作，建筑与自然完美融合。首尔著名的春季赏樱花、秋季红叶和冬季雪景最佳地点。

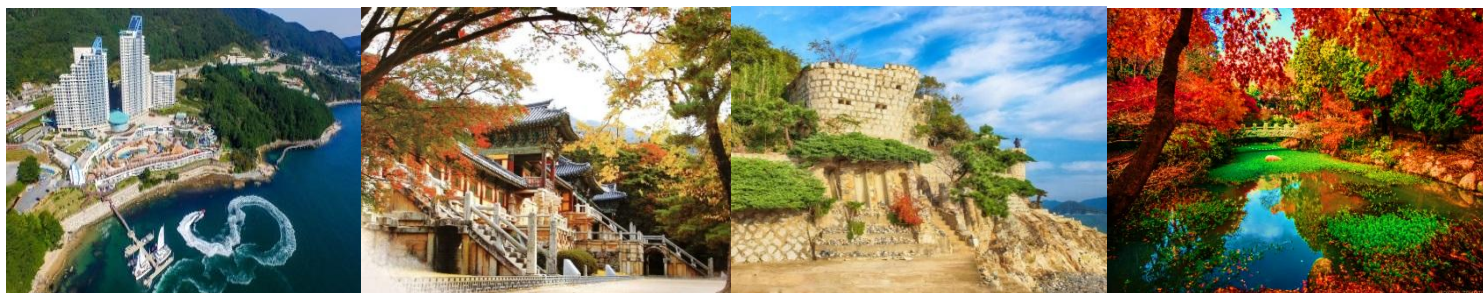


庆州皇里团路现已成为韩国新的“热门”去处。皇里团路文化街位于前新罗王朝首都，是传统与当前审美趋势的交汇点。小镇周围的小巷里遍布咖啡馆、建筑独特的餐厅和复古精品店。



韩国的圣托里尼岛，它通过壁画和艺术装置为游客提供视觉愉悦，这个历史悠久的山腰贫民窟在楼梯，小巷和拐角处行了巧妙的修饰后，成为著名的旅游目的地。

| 天数 | 早餐 | 午餐 | 晚餐 | 酒店或同级 |
|----|----|---------------|--------------|--------------------------|
| 1 | | - | - | → |
| 2 | → | 韩式白切猪肉 + 鱿鱼炖锅 | 自费 @ BIFF 广场 | 4★ 釜山 索拉利亚西铁饭店 |
| 3 | 酒店 | 烤鱼套餐 | 优食! 酱蟹鲍鱼套餐 | 独家! 5★ Sono Calm 巨济度假村 |
| 4 | 酒店 | 自费 @ 传统市场 | 优食! 龙虾海鲜火锅 | 2晚 4★ 釜山 索拉利亚西铁饭店 |
| 5 | 酒店 | 韩式炖鲭鱼 + 豆腐 | 韩国米饭生菜卷 | |
| 6 | 酒店 | 韩式铁板炒鸡 | 韩式烤猪肉 | 2晚 5★ 豪华 首尔龙山 Novotel 酒店 |
| 7 | 酒店 | 人参炖鸡汤 | 自费 @ 弘大街 | |
| 8 | 酒店 | → | | |



第一天: 新加坡 → 仁川

第二天: 仁川 ~ KTX 到釜山 ~ 甘川洞文化村 ~ 松岛天空步道 ~ BIFF 广场

第三天: 巨济 ~ 梅米城堡 (中世纪风格的魔法城堡) ~ 巨济外岛巡游 (海金刚 + 外岛Botania “地球上的热带天堂”) ~ 巨济风山

第四天: 巨济 ~ 统营 ~ 统营游览缆车 (韩国最长观光缆车超过1,975m) ~ 传统市场 ~ 弥来寺 + 柏树林 ~ 李舜臣公园 (沿着美丽的沿海小径漫步欣赏海景) ~ 釜山

第五天: 庆州 (新罗王朝首都) ~ 校村韩屋村 ~ DIY韩国辣椒酱制作 ~ 瞻星台 (秋季: 梦幻粉红草) ~ 皇理团路文化街 (超过 1000 年历史的城市街道上有无数时尚咖啡馆和手工艺品商店) ~ 韩屋风格星巴克 ~ 佛国寺 <联合国教科文组织文化遗产>

第六天: 奥特莱斯 Mall ~ KTX 到首尔 ~ 益善洞韩屋村 ~ 东大门市场

第七天: 昌德宫 <联合国教科文组织世界遗产> + 红利: 韩服体验 ~ 人参专卖店 ~ 化妆品免税店 ~ 汗蒸幕 (非式不可的独特体验: 韩式桑拿) ~ 弘大街 (满街的商店、咖啡馆和餐厅; 富有活力的街道)

第八天: 护肝宝专卖店 ~ 仁川机场 → 新加坡



备注:

Updated: 14-APR-25_CN_HN

1. 国际或当地重大节日活动举行期间, 酒店住宿可能无法按照行程安排。
2. 团队如有合并或行程顺序更改, 恕不预先告知, 以当地旅行社安排为准如遇当地酒店客满等因素, 将以同等级的酒店取代。
3. 赠送或红利项目将无任何替代或退款。季节性行程可能会因天气情况而改变。
4. 所有的酒店星级评价均以当地为标准。如遇当地酒店客满等因素, 将以同等级的酒店替代。
5. 若中英文行程版本出现不符之处, 将以中文版本为依据。
6. 房间的差异, 包括房型、面积、景观, 均由酒店分配而定。
7. 团体全程将以华语讲解

康泰旅行社
HONG THAI TRAVEL



6533 1788



enquiries@hongthai.com.sg